




# The Open AIDS Journal

Content list available at: <https://openaidsjournal.com>

## Supplementary Material

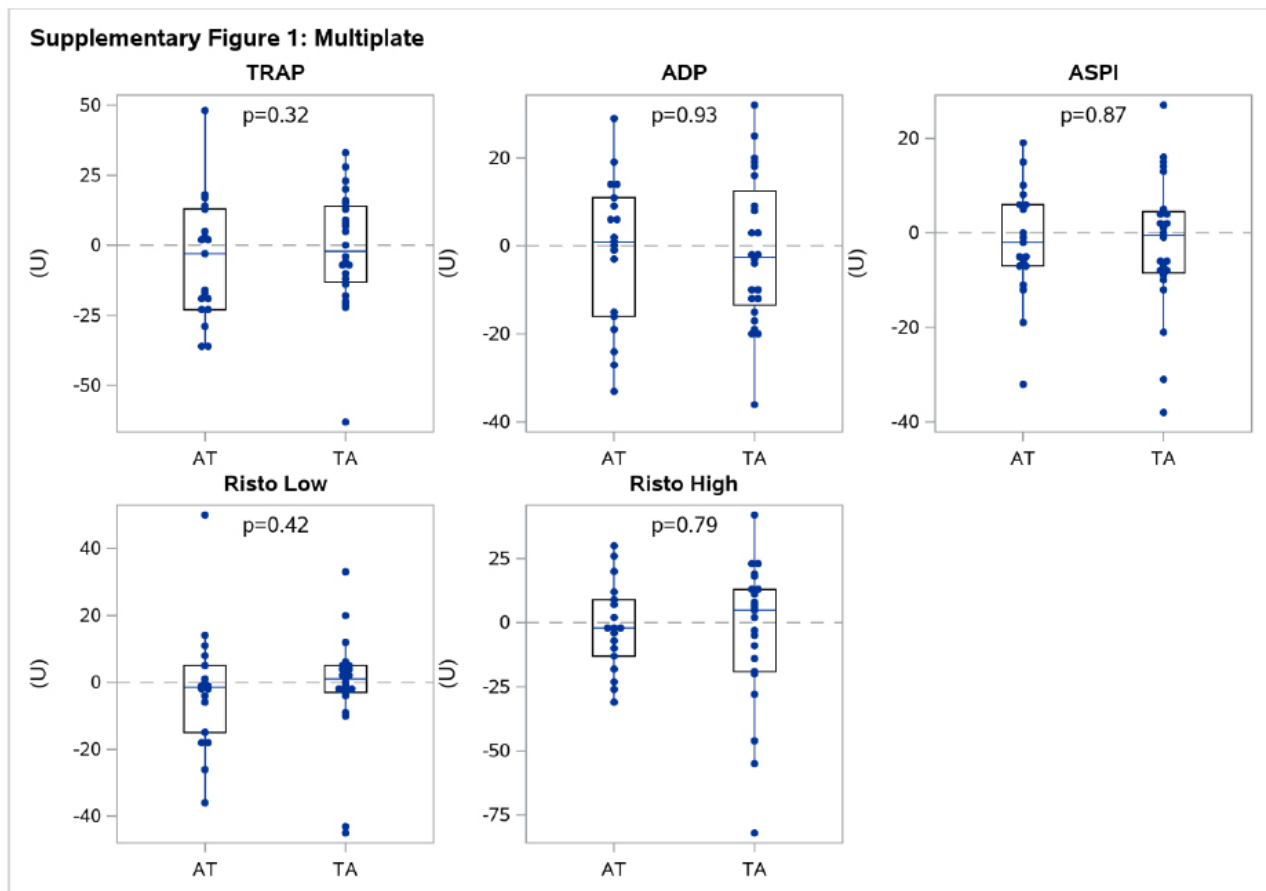


### Changes in Coagulation and Platelet Reactivity in People with HIV-1 Switching Between Abacavir and Tenofovir

Camilla H. Drabe<sup>1,\*</sup> , Frederikke F. Rønsholt<sup>1</sup>, Ditte M. Jakobsen<sup>1</sup>, Sisse R. Ostrowski<sup>2</sup>, Jan Gerstoft<sup>1</sup> and Marie Helleberg<sup>1</sup>

<sup>1</sup>Department of Infectious Diseases, Copenhagen University Hospital Rigshospitalet, Copenhagen, Denmark

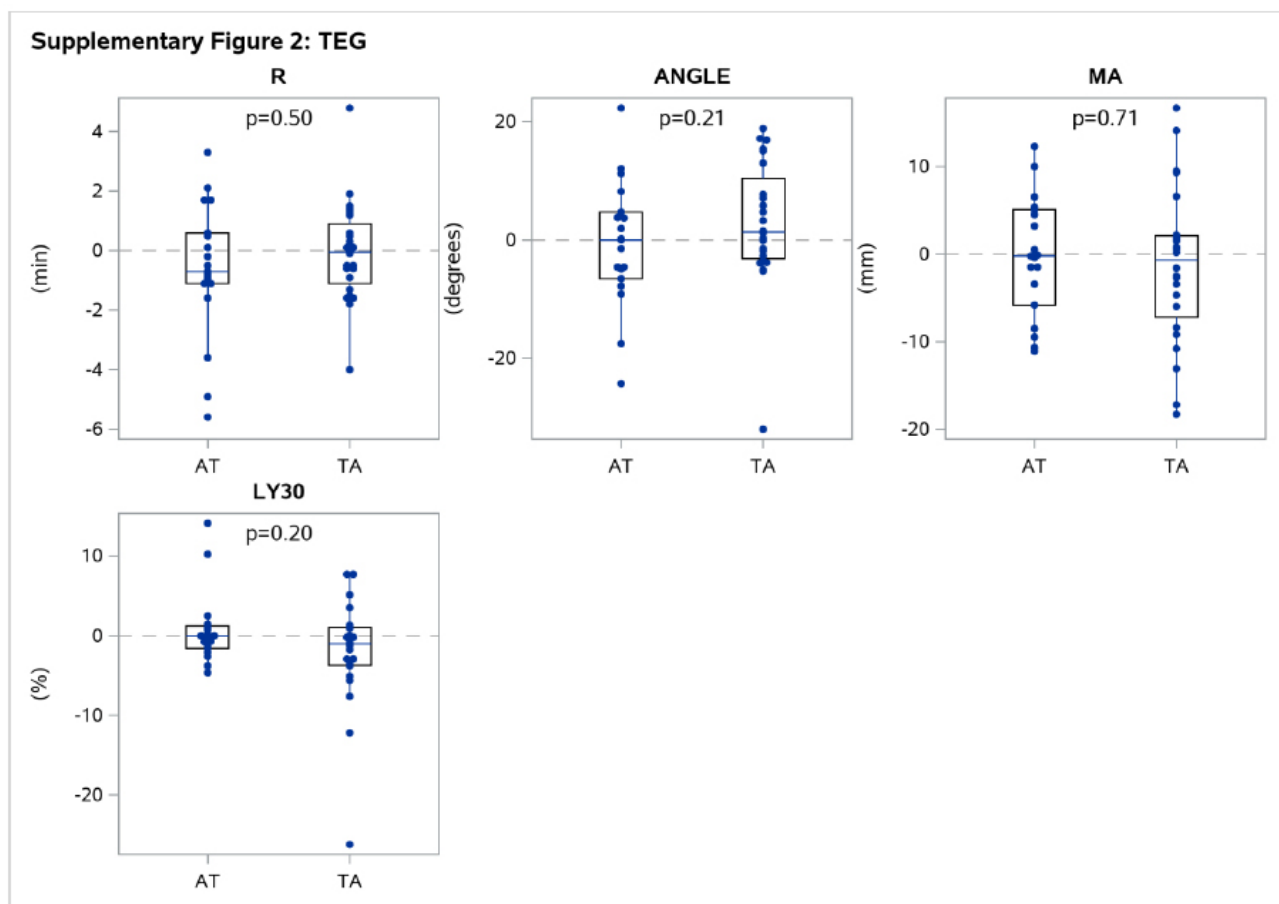
<sup>2</sup>Department of Clinical Immunology, Copenhagen University Hospital Rigshospitalet, Copenhagen, Denmark



**Supplement Figure 1 Multiplate®.** Multiplate® results. Intraindividual changes in the AT and TA group. AT group: Individuals receiving ABC at inclusion switched to TDF (tenofovir disoproxil). TA group: Individuals receiving TDF at inclusion switched to ABC. Treatment effects were assessed by Wilcoxon Rank Sum test. TRAP test (thrombin receptor-activating peptide TRAP-6 32  $\mu$ M), ADP test (adenosine diphosphate ADP 6.5  $\mu$ M), ASPI test (arachidonic acid 0.5  $\mu$ M), RISTO low test (ristocetin 0.2 mg/mL) and RISTO high test (ristocetin 0.77 mg/mL). Expressed in aggregation units (U).

**Supplementary Table 1. Lipids.** Results of lipids at inclusion and intra-individual changes during study-period by treatment order, reported as medians and interquartile ranges (IQR). AT group: Individuals receiving ABC (abacavir) at inclusion switching to TDF (tenofovir disoproxil). TA group: Individuals receiving TDF at inclusion switching to ABC. Treatment effects were assessed by Wilcoxon Rank Sum test. \*National recommendation values from the Danish society of cardiology. HDL: High density lipids, LDL: Low density lipids.

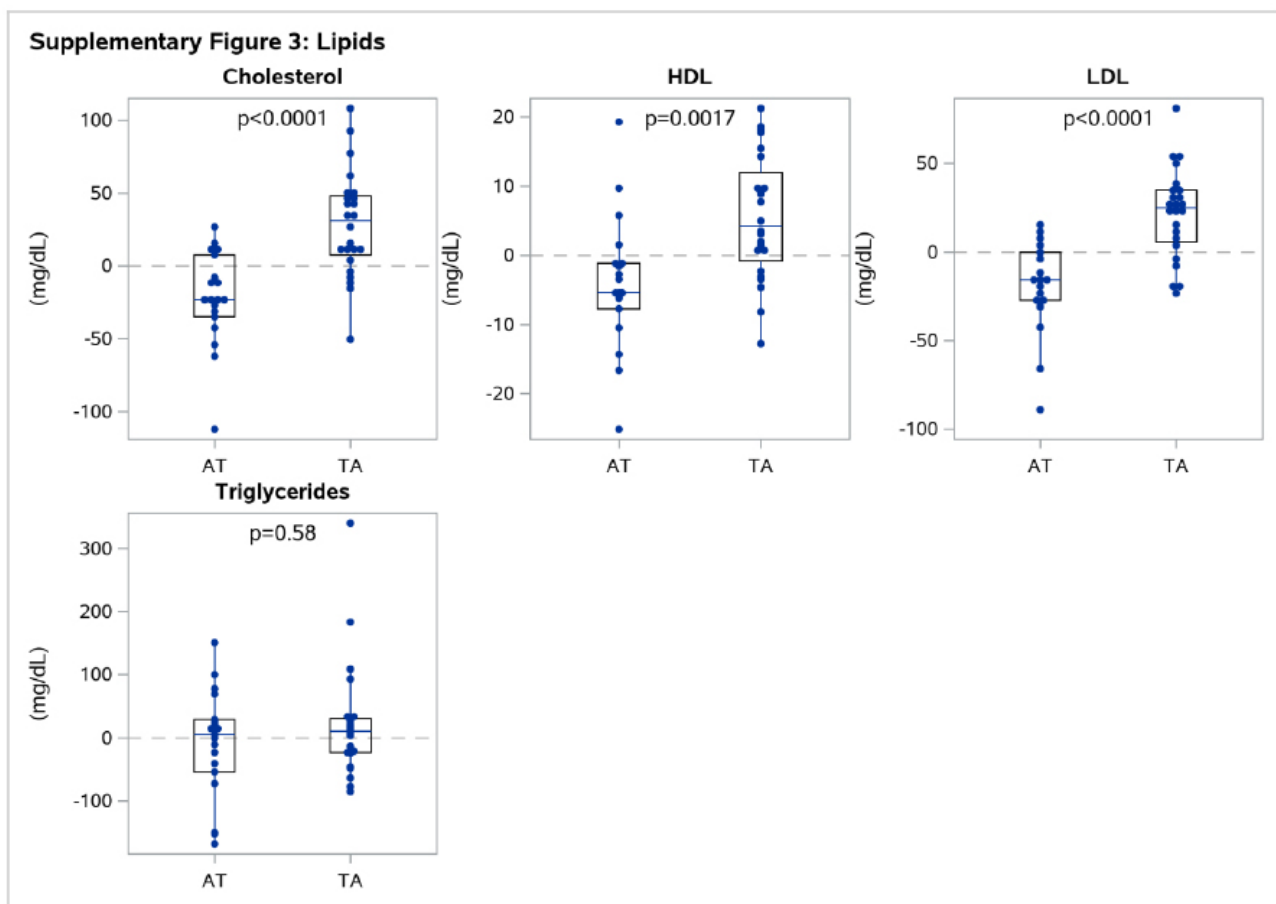
	Normal range	AT group			TA group			p-values
		N	Baseline (ABC treatment)	Intra-individual change when switching from ABC to TDF	N	Baseline (TDF treatment)	Intra-individual change when switching from TDF to ABC	Wilcoxon Rank Sum
	90%CI		Median (IQR)	Median (IQR)		Median (IQR)	Median (IQR)	
<i>Lipids</i>								
<b>Cholesterol (mg/dL)</b>	<193 *	19	220 (189-255)	-23 (-35-8)	24	191 (178-234)	31 (8-48)	<0.0001
<b>HDL (mg/dL)</b>	>39 *	19	52 (45-60)	-5 (-8--1)	24	49 (41-60)	4 (-1-12)	0.0017
<b>LDL (mg/dL)</b>	<116 *	19	123 (112-155)	-15 (-27-0)	24	128 (112-164)	25 (6-35)	<0.0001
<b>Triglycerides (mg/dL)</b>	<77 *	19	130 (93-268)	5 (-54-29)	24	107 (80-178)	11 (-23-31)	0.58



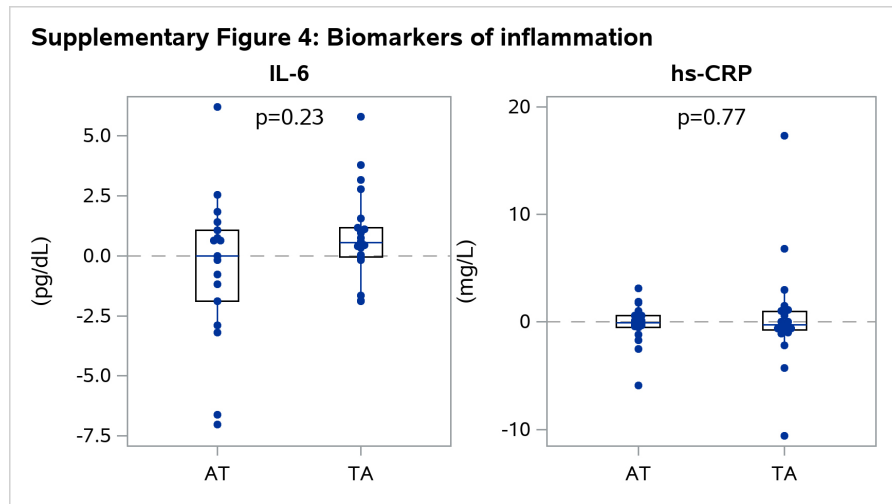
**Supplement Figure 2 TEG.** TEG® results. Intraindividual changes in the AT and TA group. AT group: Individuals receiving ABC at inclusion switched to TDF (tenofovir disoproxil). TA group: Individuals receiving TDF at inclusion switched to ABC. Treatment effects were assessed by Wilcoxon Rank Sum test. The variables recorded were reaction time (R), rate of initial fibrin formation (Angle), maximum amplitude (MA), and lysis after 30 minutes (Ly30).

**Supplementary Table 2. Biomarkers of inflammation. Results of biomarkers of inflammation at inclusion and intra-individual changes during study-period by treatment order, reported as medians and interquartile ranges (IQR). AT group: Individuals receiving ABC (abacavir) at inclusion switching to TDF (tenofovir disoproxil). TA group: Individuals receiving TDF at inclusion switching to ABC. Treatment effects were assessed by Wilcoxon Rank Sum test. IL-6: Interleukin-6. hs-CRP: High-sensitivity C-reactive protein.**

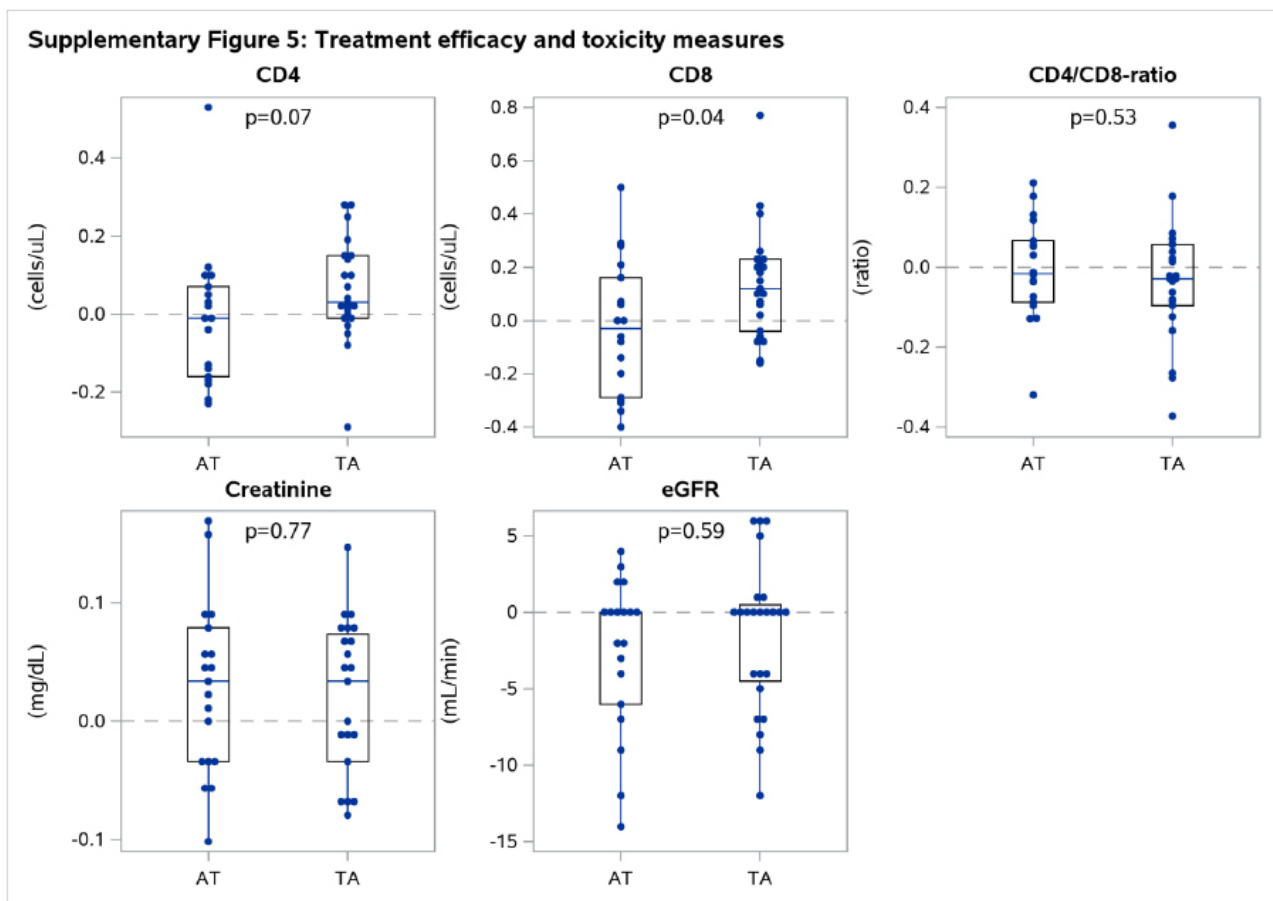
	Normal range	AT group		TA group		p-values		
		N	Baseline (ABC treatment)	Intra-individual change when switching from ABC to TDF	N	Baseline (TDF treatment)	Intra-individual change when switching from TDF to ABC	Wilcoxon Rank Sum
	90%CI		Median (IQR)	Median (IQR)		Median (IQR)	Median (IQR)	
<i>Biomarkers of inflammation</i>								
<b>IL6 (pg/mL)</b>		17	1.40 (0.50-3.95)	0.00 (-1.89-1.07)	23	1.12 (0.34-2.54)	0.56 (-0.04-1.17)	0.23
<b>hs-CRP (mg/L)</b>	<10 mg/	19	1.60 (0.50-3.00)	-0.10 (-0.50-0.60)	24	1.70 (0.85-2.90)	-0.25 (-0.75-0.95)	0.77



**Supplement Figure 3 Lipids.** Lipid results. Intraindividual changes in the AT and TA group. AT group: Individuals receiving ABC at inclusion switched to TDF (tenofovir disoproxil). TA group: Individuals receiving TDF at inclusion switched to ABC. Treatment effects were assessed by Wilcoxon Rank Sum test. HDL: High density lipids, LDL: Low density lipids



**Supplement Figure 4 Biomarkers of inflammation.** Biomarkers of inflammation results. Intraindividual changes in the AT and TA group. AT group: Individuals receiving ABC at inclusion switched to TDF (tenofovir disoproxil). TA group: Individuals receiving TDF at inclusion switched to ABC. Treatment effects were assessed by Wilcoxon Rank Sum test. IL-6: Interleukin-6. hs-CRP: High-sensitivity C-reactive protein



**Supplement Figure 5 Treatment efficacy and toxicity measures.** Intraindividual changes in the AT and TA group. AT group: Individuals receiving ABC at inclusion switched to TDF (tenofovir disoproxil). TA group: Individuals receiving TDF at inclusion switched to ABC. Treatment effects were assessed by Wilcoxon Rank Sum test. CD4: cluster of differentiation 4. CD8: cluster of differentiation 8. eGFR: estimated glomerular filtration rate.

**Supplementary Table 3: Treatment efficacy and toxicity measures. Results of treatment efficacy and toxicity measures at inclusion and intra-individual changes during study-period by treatment order, reported as medians and interquartile ranges (IQR). AT group: Individuals receiving ABC (abacavir) at inclusion switching to TDF (tenofovir disoproxil). TA group: Individuals receiving TDF at inclusion switching to ABC. Treatment effects were assessed by Wilcoxon Rank Sum test. CD4: cluster of differentiation 4. CD8: cluster of differentiation 8. eGFR: estimated glomerular filtration rate.**

	Normal range	AT group			TA group			p-values
		N	Baseline (ABC treatment)	Intra-individual change when switching from ABC to TDF	N	Baseline (TDF treatment)	Intra-individual change when switching from TDF to ABC	
	90%CI		Median (IQR)	Median (IQR)		Median (IQR)	Median (IQR)	
<i>Treatment efficacy and toxicity measures</i>								
<b>CD4 (cells/<math>\mu</math>L)</b>	400-1700	18	680 (570-760)	-10 (-160-70)	23	690 (540-850)	30 (-10-150)	0.07
<b>CD8 (cells/<math>\mu</math>L)</b>	200-1400	18	970 (640-1100)	-30 (-290-160)	23	900 (630-1000)	120 (-40-230)	<b>0.04</b>
<b>CD4/CD8-ratio</b>		18	0.73 (0.53-0.90)	-0.02 (-0.09-0.07)	23	0.85 (0.58-1.22)	-0.03 (-0.10-0.06)	0.53
<b>Creatinine (mg/dL)</b>	0.68-1.19	19	0.93 (0.84-0.96)	-0.03 (-0.08-0.03)	24	0.93 (0.87-1.01)	-0.03 (-0.07-0.03)	0.77
<b>eGFR (mL/min)</b>	>90	19	88.0 (82.0-90.0)	0.0 (0.0-6.0)	24	86.0 (79.0-90.0)	0.0 (-0.5-4.5)	0.59

© 2022 Drabe *et al.*

This is an open access article distributed under the terms of the Creative Commons Attribution 4.0 International Public License (CC-BY 4.0), a copy of which is available at: <https://creativecommons.org/licenses/by/4.0/legalcode>. This license permits unrestricted use, distribution, and reproduction in any medium, provided the original author and source are credited.